

4

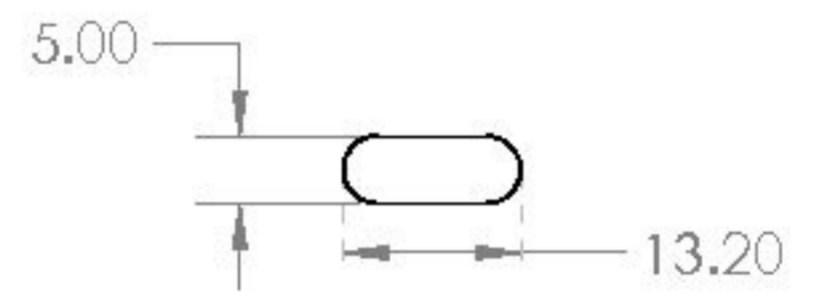
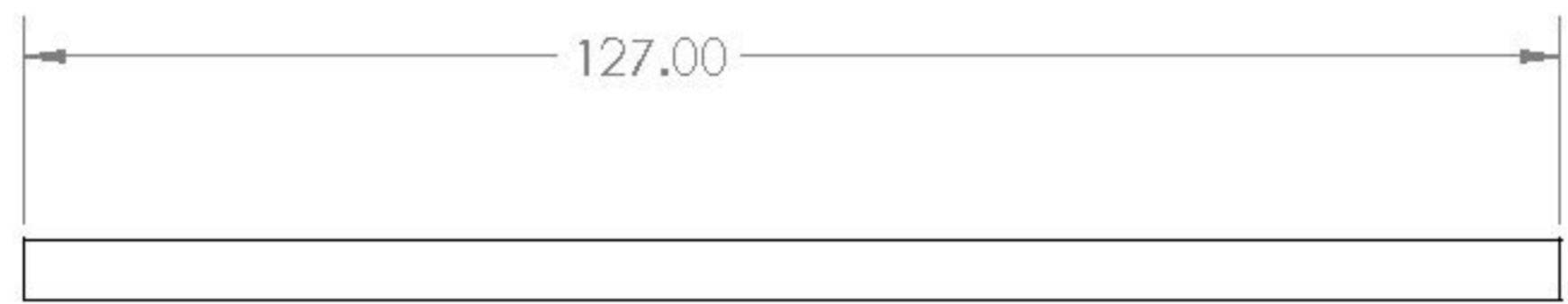
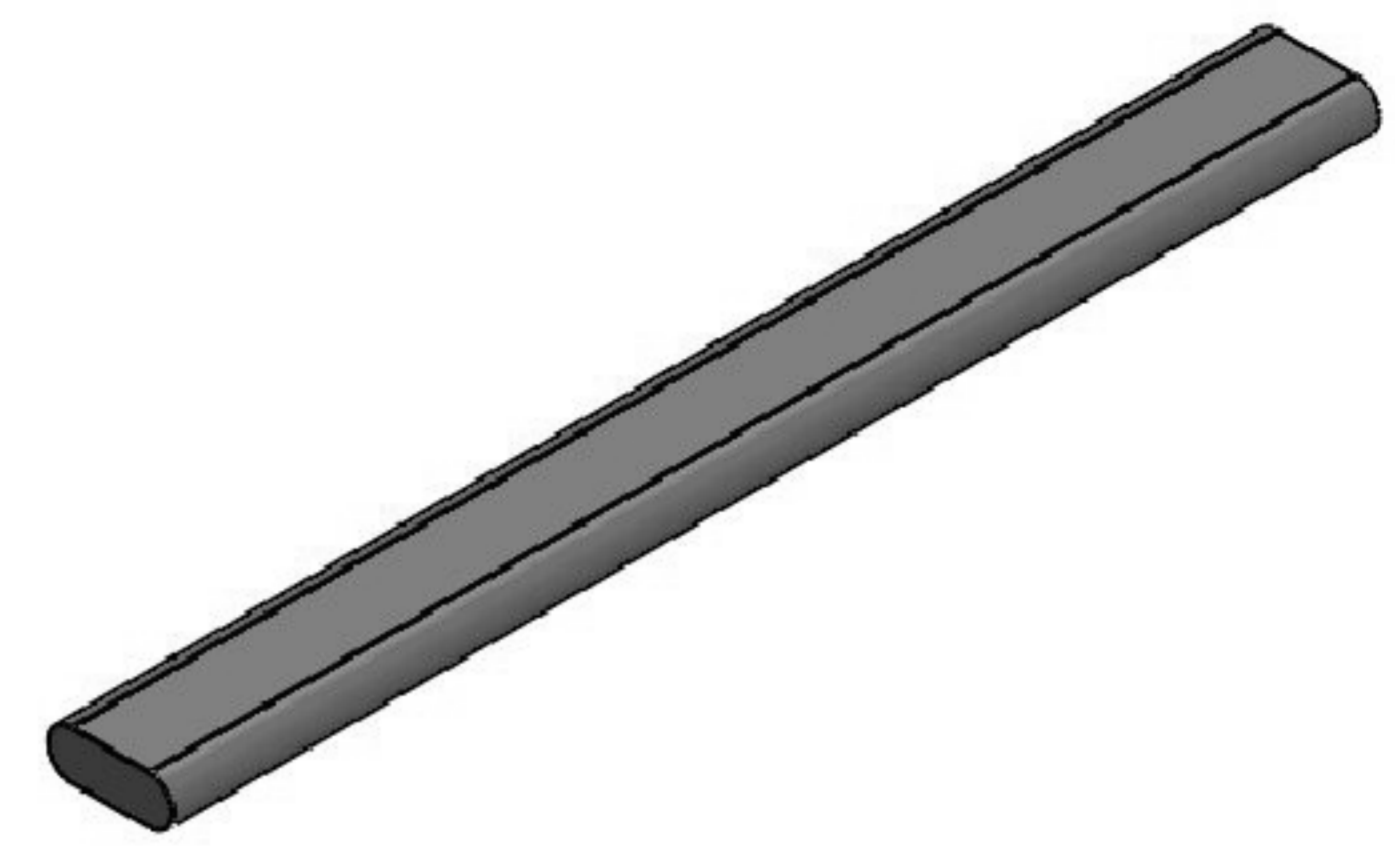
3

2

1

NOTE: UNLESS OTHERWISE SPECIFIED

- 1. MATERIAL: Copper
- 2. Wick Structure: Sintered
- 3. Working Fluid: Water



B

B

A


A

4

3

2

1

UNLESS OTHERWISE SPECIFIED: DIMENSIONS ARE IN INCHES TOLERANCES: ANGULAR: $\pm 1^\circ$ BEND $\pm$ .X $\pm$ .1 .XX $\pm$ .01 .XXX $\pm$ .005 INTERPRET GEOMETRIC TOLERANCING PER ASME Y14.5-2009 DO NOT SCALE DRAWING	DRAWN _____	NAME _____	DATE _____	 <b>ERMORE CALIFORNIA</b>
	CHECKED _____	<b>PROPRIETARY AND CONFIDENTIAL</b> THE INFORMATION CONTAINED IN THIS DRAWING IS THE SOLE PROPERTY OF COOLING SOURCE. ANY REPRODUCTION IN PART OR AS A WHOLE WITHOUT THE WRITTEN PERMISSION OF COOLING SOURCE IS PROHIBITED.		
	ENG APPR. _____		<b>10x127mm Flat Heat Pipe</b>	
			SCALE: 1:1	SHEET 1 OF 1

10x127mm Flat Heat Pipe

SIZE B CS400-1127-F-OA REV

SCALE: 1:1 SHEET 1 OF 1