

4

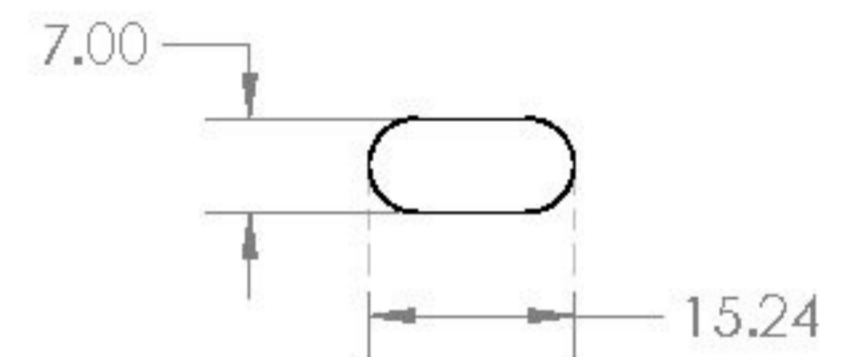
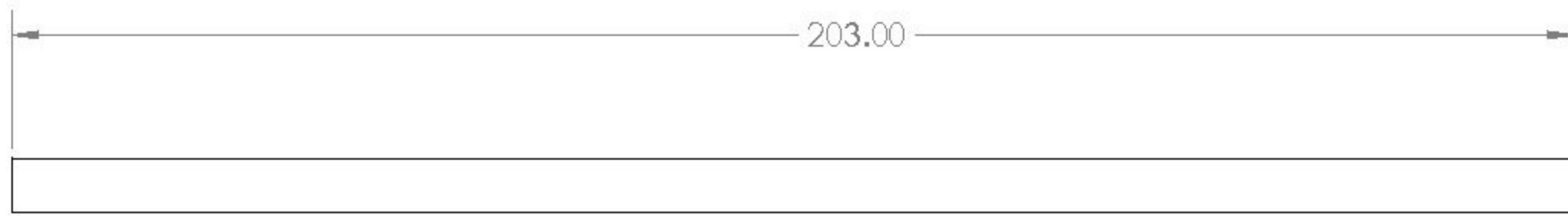
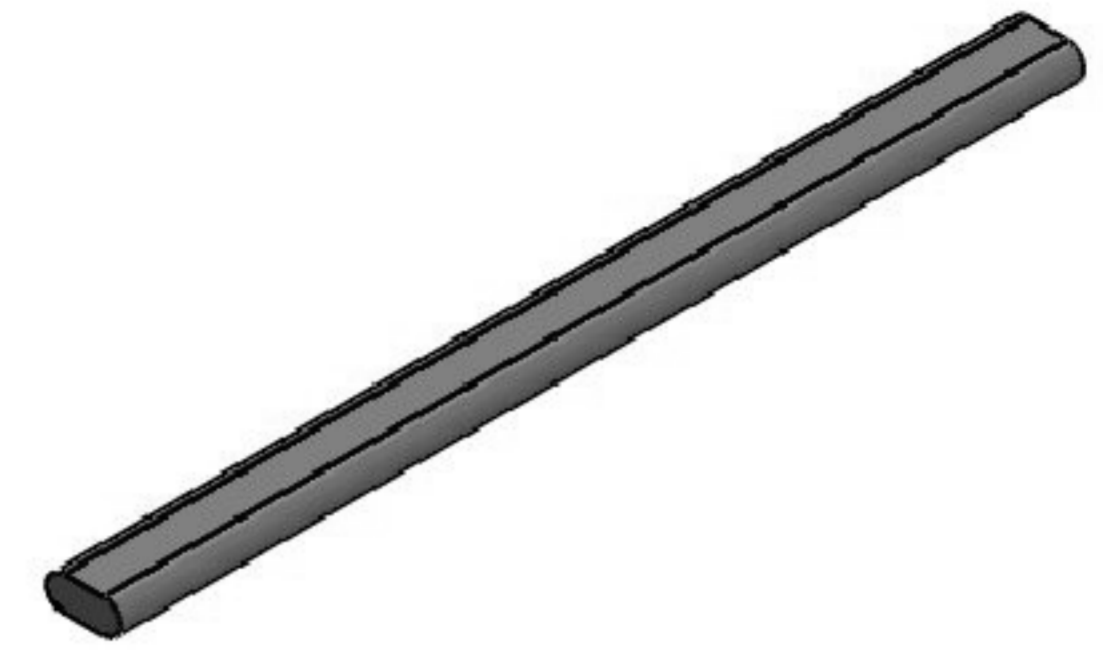
3


2

1

NOTE: UNLESS OTHERWISE SPECIFIED

- 1. MATERIAL: Copper
- 2. Wick Structure: Sintered
- 3. Working Fluid: Water



UNLESS OTHERWISE SPECIFIED: DIMENSIONS ARE IN INCHES TOLERANCES: ANGULAR: ±1° BEND ± .X±.1 .XX±.01 .XXX±.005 INTERPRET GEOMETRIC TOLERANCING PER ASME Y14.5-2009 DO NOT SCALE DRAWING	DRAWN _____	NAME _____	DATE _____	 <b>ERMORE CALIFORNIA</b>
	CHECKED _____	<b>PROPRIETARY AND CONFIDENTIAL</b> THE INFORMATION CONTAINED IN THIS DRAWING IS THE SOLE PROPERTY OF COOLING SOURCE. ANY REPRODUCTION IN PART OR AS A WHOLE WITHOUT THE WRITTEN PERMISSION OF COOLING SOURCE IS PROHIBITED.		
	ENG APPR. _____	<b>12x203.2mm Flat Heat Pipe</b>		REV _____
SCALE: 1:1			SHEET 1 OF 1	

4

3

2

1

B

B

A

A