

4

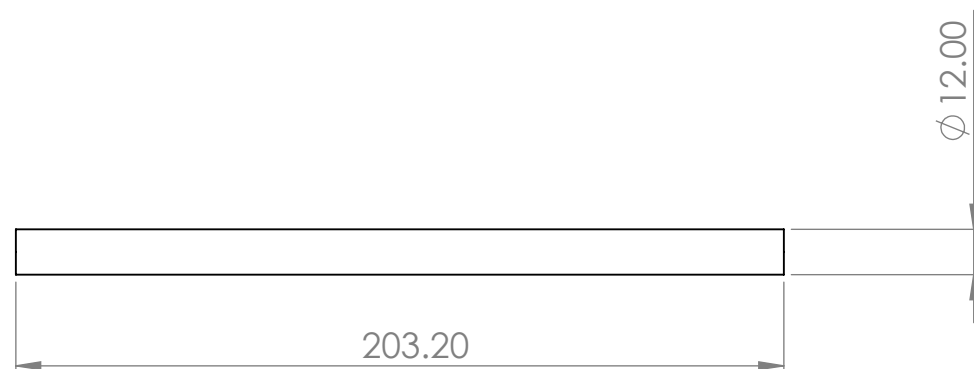
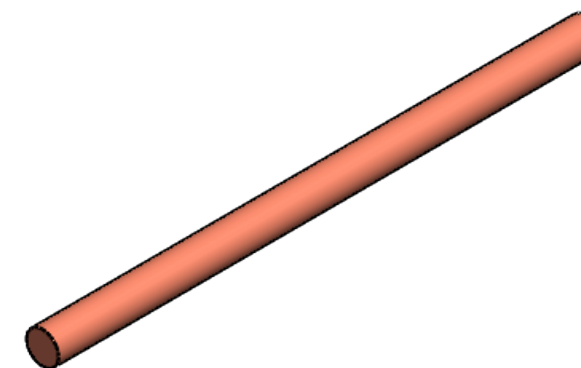
3


2

1

NOTE:

- 1. MATERIAL: Copper
- 2. Wick: Sintred
- 3. Working Fluid: Water



| | | | | |
|--|---|------------|--------------|---|
| UNLESS OTHERWISE SPECIFIED: DIMENSIONS ARE IN INCHES TOLERANCES: ANGULAR: ±1° BEND ± .X±.1 .XX±.01 .XXX±.005 | DRAWN | NAME | DATE |  LIVERMORE CALIFORNIA |
| | CHECKED | | | |
| | ENG APPR. | | | |
| INTERPRET GEOMETRIC TOLERANCING PER ASME Y14.5- 2009 | PROPRIETARY AND CONFIDENTIAL THE INFORMATION CONTAINED IN THIS DRAWING IS THE SOLE PROPERTY OF COOLING SOURCE. ANY REPRODUCTION IN PART OR AS A WHOLE WITHOUT THE WRITTEN PERMISSION OF COOLING SOURCE IS PROHIBITED. | | | 12 X 203 mm Cu Heat Pipe |
| DO NOT SCALE DRAWING | | | | SIZE B CS400-2203-R-OA |
| | | SCALE: 1:2 | SHEET 1 OF 1 | |

4

3

2

1

B

B

A

A