

4

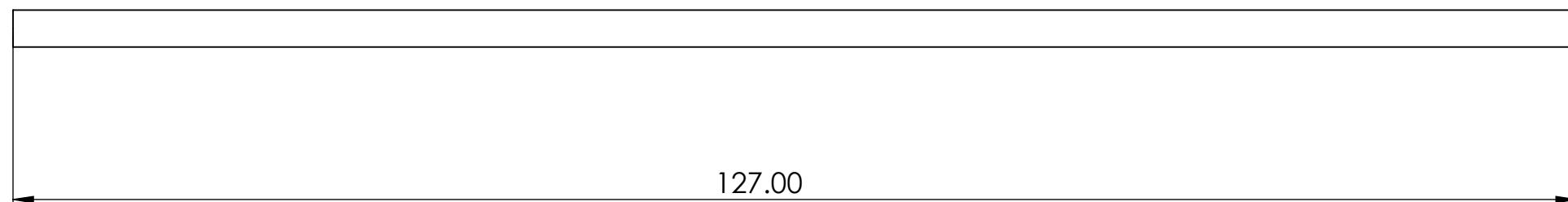
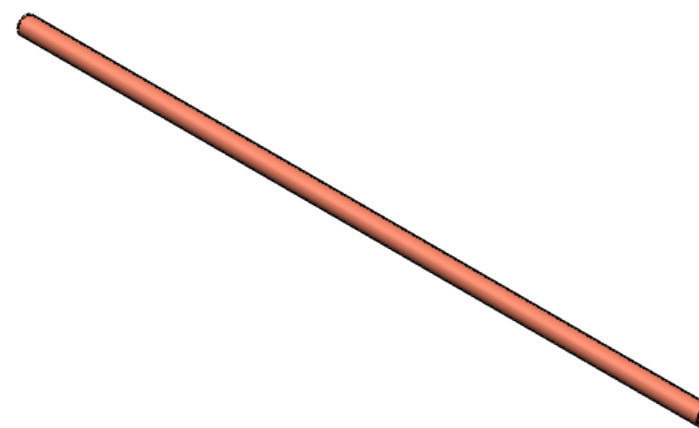
3

2

1


NOTE: UNLESS OTHERWISE SPECIFIED

- 1. MATERIAL: COPPER
- 2. Wick Structure: Sintered
- 3. Working Fluid: Water



Ø 3.00

127.00

UNLESS OTHERWISE SPECIFIED: DIMENSIONS ARE IN INCHES TOLERANCES: ANGULAR: ±1° BEND ± .X±.1 .XX±.01 .XXX±.005 INTERPRET GEOMETRIC TOLERANCING PER ASME Y14.5- 2009 DO NOT SCALE DRAWING	DRAWN	NAME	DATE	 <b>LIVERMORE CALIFORNIA</b>
	CHECKED			
	ENG APPR.			
	<b>PROPRIETARY AND CONFIDENTIAL</b> THE INFORMATION CONTAINED IN THIS DRAWING IS THE SOLE PROPERTY OF COOLING SOURCE. ANY REPRODUCTION IN PART OR AS A WHOLE WITHOUT THE WRITTEN PERMISSION OF COOLING SOURCE IS PROHIBITED.			<b>3 X 127 mm Cu Heat Pipe</b>
	SIZE	CS400-3127-R-OA	REV	
	SCALE: 1:1			SHEET 1 OF 1

4

3

2

1

SIZE **B** CS400-3127-R-OA REV  
 SCALE: 1:1 SHEET 1 OF 1