

4

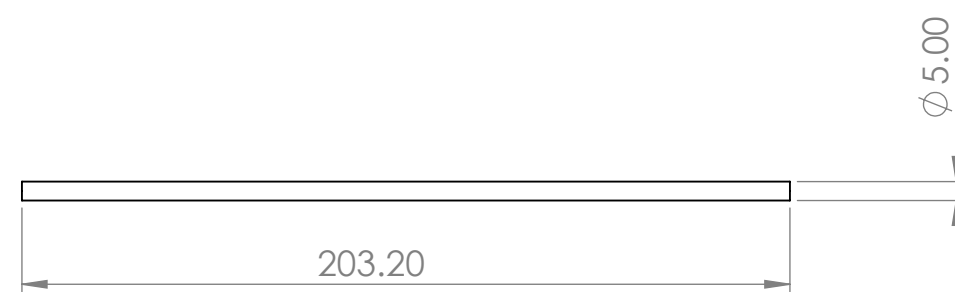
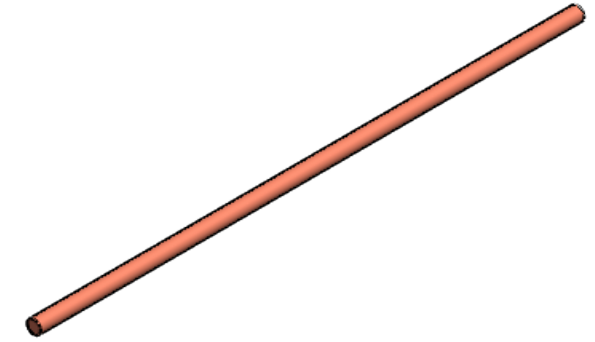
3


2

1

NOTE:

- 1. MATERIAL: Copper
- 2. Wick: Sintred
- 3. Working Fluid: Water



UNLESS OTHERWISE SPECIFIED: DIMENSIONS ARE IN INCHES TOLERANCES: ANGULAR: $\pm 1^\circ$ BEND $\pm$ .X $\pm$ .1 .XX $\pm$ .01 .XXX $\pm$ .005 INTERPRET GEOMETRIC TOLERANCING PER ASME Y14.5- 2009 DO NOT SCALE DRAWING	DRAWN	NAME	DATE	 <b>LIVERMORE CALIFORNIA</b>
	CHECKED			
	ENG APPR.			
	<b>PROPRIETARY AND CONFIDENTIAL</b> THE INFORMATION CONTAINED IN THIS DRAWING IS THE SOLE PROPERTY OF COOLING SOURCE. ANY REPRODUCTION IN PART OR AS A WHOLE WITHOUT THE WRITTEN PERMISSION OF COOLING SOURCE IS PROHIBITED.			<b>5 X 203.2 mm Cu Heat Pipe</b>
	SIZE	CS400-5203-R-OA	REV	
	SCALE: 1:2		SHEET 1 OF 1	

4

3

2

1

B

B

A

A