

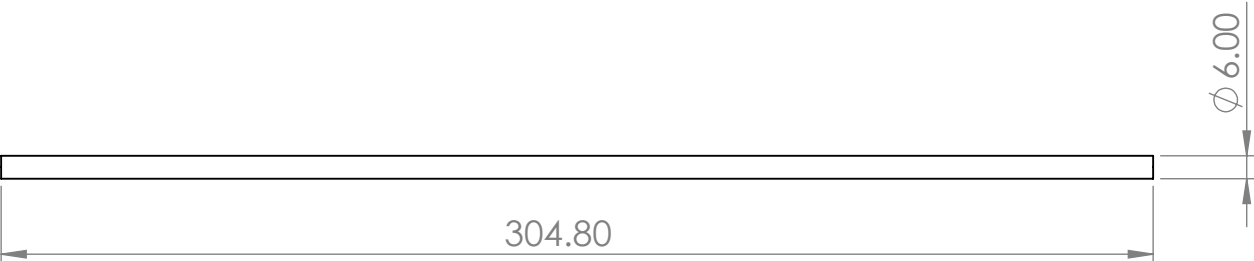
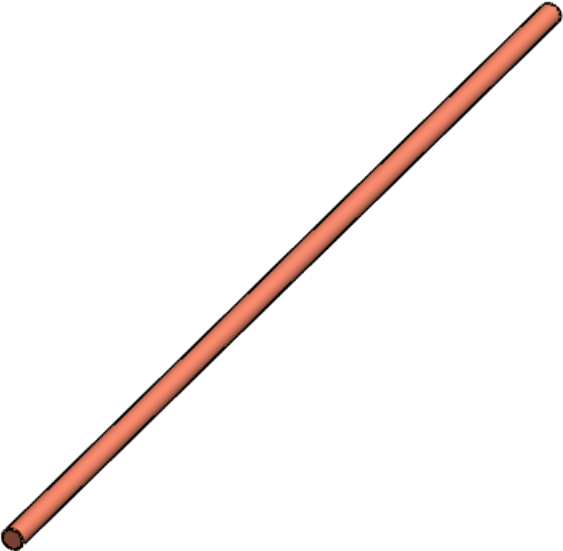
4


3

2

1

- NOTE:
- 1. MATERIAL: Copper
  - 2. Wick: Sintred
  - 3. Working Fluid: Water



UNLESS OTHERWISE SPECIFIED:		NAME		DATE		 LIVERMORE CALIFORNIA			
DIMENSIONS ARE IN INCHES		DRAWN				6 X 304.8 mm Cu Heat Pipe			
TOLERANCES:		CHECKED							
ANGULAR: ±1°    BEND ±		ENG APPR.							
.X ±.1 .XX ±.01 .XXX ±.005									
INTERPRET GEOMETRIC TOLERANCING PER ASME Y14.5- 2009		<b>PROPRIETARY AND CONFIDENTIAL</b>  THE INFORMATION CONTAINED IN THIS DRAWING IS THE SOLE PROPERTY OF COOLING SOURCE. ANY REPRODUCTION IN PART OR AS A WHOLE WITHOUT THE WRITTEN PERMISSION OF COOLING SOURCE IS PROHIBITED.				SIZE		REV	
						<b>B</b>		CS400-6304-R-OA	
DO NOT SCALE DRAWING				SCALE: 1:5				SHEET 1 OF 1	

4

3

2

1