

4

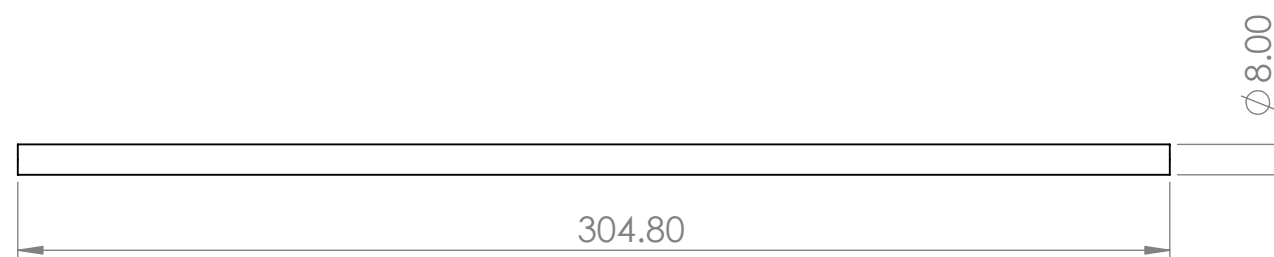
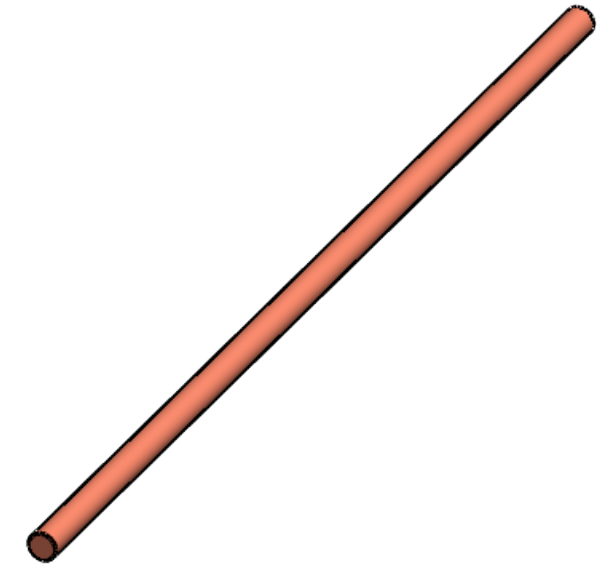
3


2

1

NOTE:

- 1. MATERIAL: Copper
- 2. Wick: Sintred
- 3. Working Fluid: Water



UNLESS OTHERWISE SPECIFIED: DIMENSIONS ARE IN INCHES TOLERANCES: ANGULAR: ±1° BEND ± .X±.1 .XX±.01 .XXX±.005 INTERPRET GEOMETRIC TOLERANCING PER ASME Y14.5- 2009 DO NOT SCALE DRAWING	DRAWN	NAME	DATE	 <b>LIVERMORE CALIFORNIA</b>
	CHECKED			
	ENG APPR.			
	<b>PROPRIETARY AND CONFIDENTIAL</b> THE INFORMATION CONTAINED IN THIS DRAWING IS THE SOLE PROPERTY OF COOLING SOURCE. ANY REPRODUCTION IN PART OR AS A WHOLE WITHOUT THE WRITTEN PERMISSION OF COOLING SOURCE IS PROHIBITED.			<b>8 X 304.8 mm Cu Heat Pipe</b>
	SIZE	CS400-8304-R-OA	REV	
	SCALE: 1:5			SHEET 1 OF 1

4

3

2

1

B

B

A

A