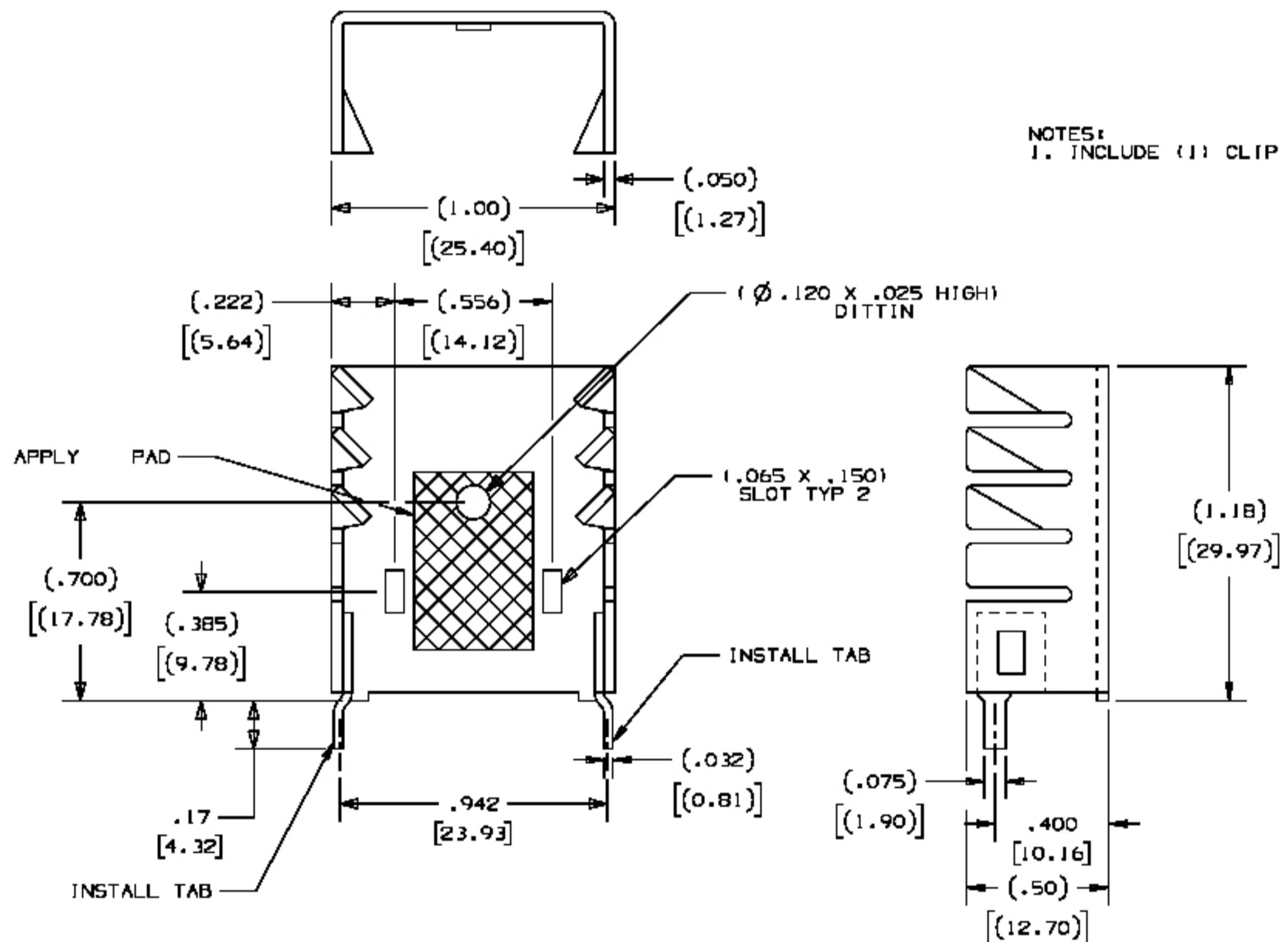


NOTES:

- 1 MATERIAL: AL 6063-T5 + AL1100(Tin plate)
- 2 FINISH: Anodize black .
- 3. Remove all burrs and sharp edges.
- 4. \triangle Is critical inspection point, numbering in triangles to be used for cross reference of inspection report to drawing dimension or feature.

REV	DESCRIPTION	DATE	ORIGINATOR	APPROVED
--	--	--	--	--



NOTES:
1. INCLUDE (1) CLIP 100005

ALL DIMENSIONS ARE IN mm		Cooling Source			
UNLESS NOTED OTHERWISE	CONCENTRICITY = 0.05 TIR	CUSTOMER PART NUMBER	NAME: Heat sink		
TOLERANCES:	$16\sqrt{\text{FINISH}}$	---	DWG SIZE	SCALE	CUS REV
LINEAR		---	AL	--	1
.X ± 0.2		Cooling Source PART NUMBER	C S REV		
.XX ±		CSBL-136-A-1A	01		
.XXX ±		Cooling Source PART NUMBER	SHEET	1 of 1	DATE
ANGULAR	THIRD ANGLE PROJECTION	---			12-11-2011
.X ± 1.0°					
.XX ± 0.5°					
DO NOT SCALE DRAWING					